

State of Wyoming Corner Record

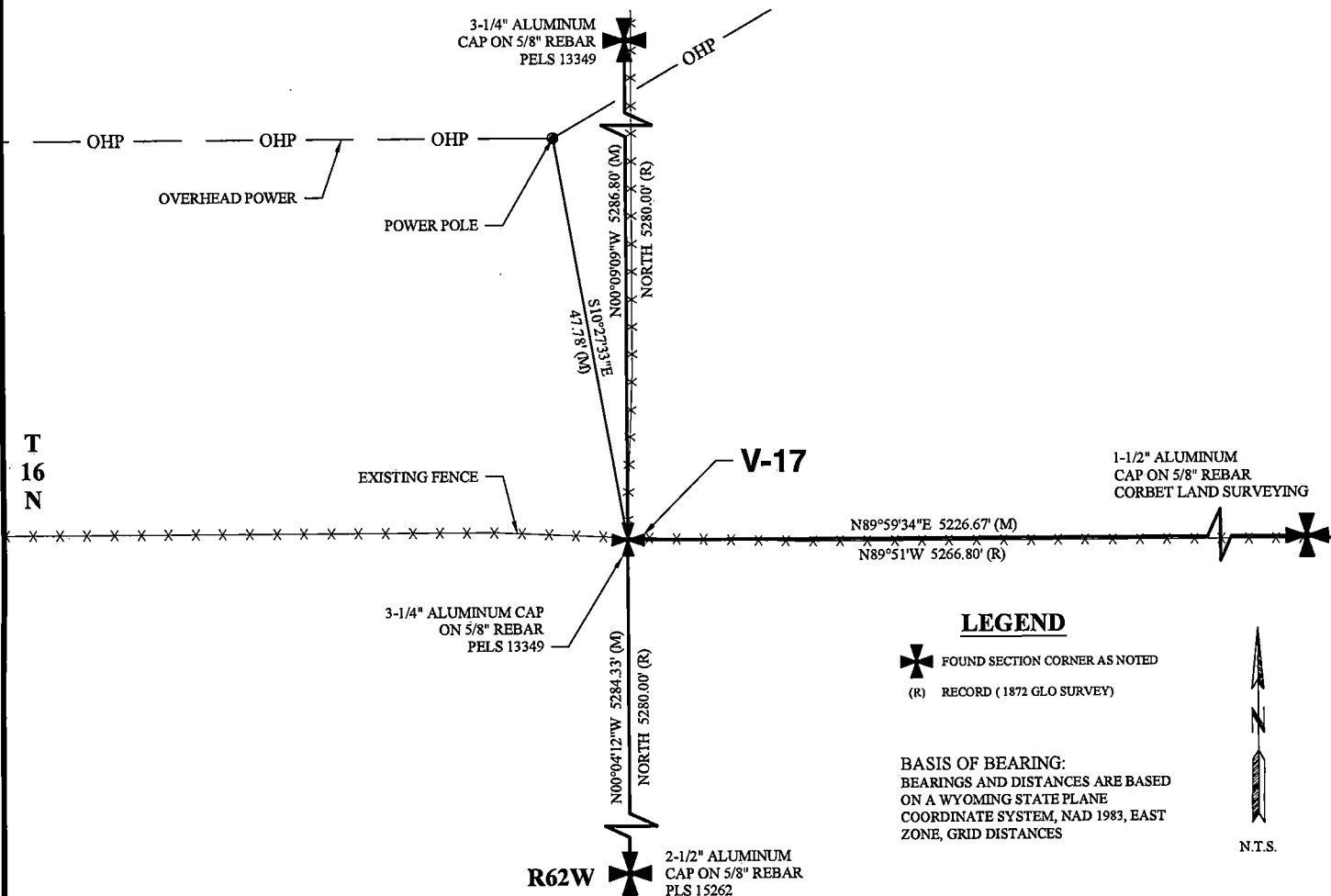
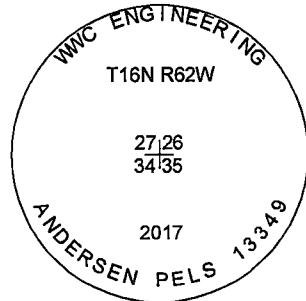
(In compliance with the CORNER PERPETUATION AND FILING ACT, Wyoming Statutes, 1997, Section 33-29-140, et seq., and the Rules and Regulations of the Board of Registration for Professional Engineers and Professional Land Surveyors)

Reverse side of this form may be used if more space is needed.

Record of original survey and citation of source of historical information (if corner is lost or obliterated.) Description of corner monumentation evidence found and/or monument and accessories established to perpetuate the location of this corner. Sketch of relative location of monument, accessories, and reference points with course and distance to adjacent corner(s) (if determined in this survey). Method and rationale for reestablishment of lost or obliterated corner.

EVIDENCE RECORD: 1872 GLO Survey; North between sections 34 & 35, 80.00 chains. Set sand stone 20"x11"x3" for corner to sections 26, 27, 34 & 35.

EVIDENCE FOUND: December 2017: Sand stone from 1872 GLO survey not found. Accepted north & east-west fence intersection as best available evidence for the corner to sections 26, 27, 34 & 35. Set a 3 1/4" aluminum cap marked as shown on a 5/8" rebar, 24" long, at fence intersection.



Date of Field Work: December 05, 2017

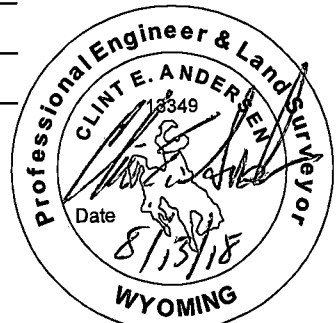
Office Reference: 2017-135

CROSS INDEX DIAGRAM

1	2	3	4	5	6	7	8	9	10	11	12	13	14	15	16	17	18	19	20	21	22	23	24	25	
A																									A
B																									B
C	6	5	4	3	2	1																			C
D																									D
E																									E
F																									F
G	7	8	9	10	11	12																			G
H																									H
J																									J
K																									K
L	18	17	16	15	14	13																			L
M																									M
N																									N
O																									O
P	19	20	21	22	23	24																			P
Q																									Q
R																									R
S																									S
T	30	29	28	27	26	25																			T
U																									U
V																									V
W																									W
X	31	32	33	34	35	36																			X
Y																									Y
Z																									Z

Land Surveyor / Firm / Address
 Clint E. Andersen
 WWC Engineering
 51 N. 15th Street, Suite 1
 Billings, MT 59101
 Telephone: (406) 894-2210

This corner record was prepared by me or under my direction and supervision.
 SEAL & SIGNATURE



Corner Name: Northeast Corner Section: 34 T 16N R 62W; 6TH P.M. Cross-Index No.: V-17
 SBRPEPLS/PLSW: March 1994; PLSW January 1998

REC # : 739858
 RECORDED 10/1/2018 AT 1:31 PM BK# 2598 PG# 292
 Debra K. Lee, CLERK OF LARAMIE COUNTY, WY PAGE 1 OF 1